



SIDI ABDELRAHMAN  
EVERY ELEMENT TELLS A STORY.

# RIV

PUBLICATION 01  
Melee

# AT RIV, WE BELIEVE IN THE POWER OF ELEMENTS.

*Wake up to the captivating view of the lagoon and enjoy the Mediterranean breeze from your balcony. With Riv, every day is an invitation to unwind, connect, and savor the essence of coastal living.*

Every aspect of our development is handcrafted to create a unique living experience that promotes connection and harmony among residents.

This is a place where neighbors forge friendships, and moments shared by the lagoon turn into cherished memories.

Summers at Riv are an invitation to embrace the magic of coastal living. From sunlit mornings by the lagoon to starlit evenings with loved ones, every moment is designed to leave you with unforgettable memories that will last a lifetime.





# EVERY ELEMENT TELLS A STORY



# LOCATION

*From open green spaces to walking paths that encourage moments of reflection, Riv's landscape enhances the connection between nature and daily living.*

Located in the heart of the Egyptian North Coast, in the charming Sidi AbdelRahman, Riv offers an exclusive retreat where every detail is meticulously designed to enhance the community's well-being.

This intimate development features beautifully designed apartment buildings overlooking Riv's serene lagoon, surrounded by lush, thoughtfully curated landscapes.



# RIV

SIDI ABDELRAHMAN  
KILO 136

RIVETTE

HACIENDA  
WHITE

AMWAJ

SEASHELL

STELLA  
HEIGHTS

MARASSI



# A CLOSER LOOK





# PRODUCT MIX

*Fully finished*

## Area Range:

One Bedroom = 70 SQM  
Two Bedroom = 100 SQM  
Three Bedroom = 115 SQM  
Lofts = 79 SQM







# COASTAL LIVING

*Summers at Riv are an invitation to embrace the magic of coastal living. From sunlit mornings by the lagoon to starlit evenings with loved ones, every moment is designed to leave you with unforgettable memories that will last a lifetime.*



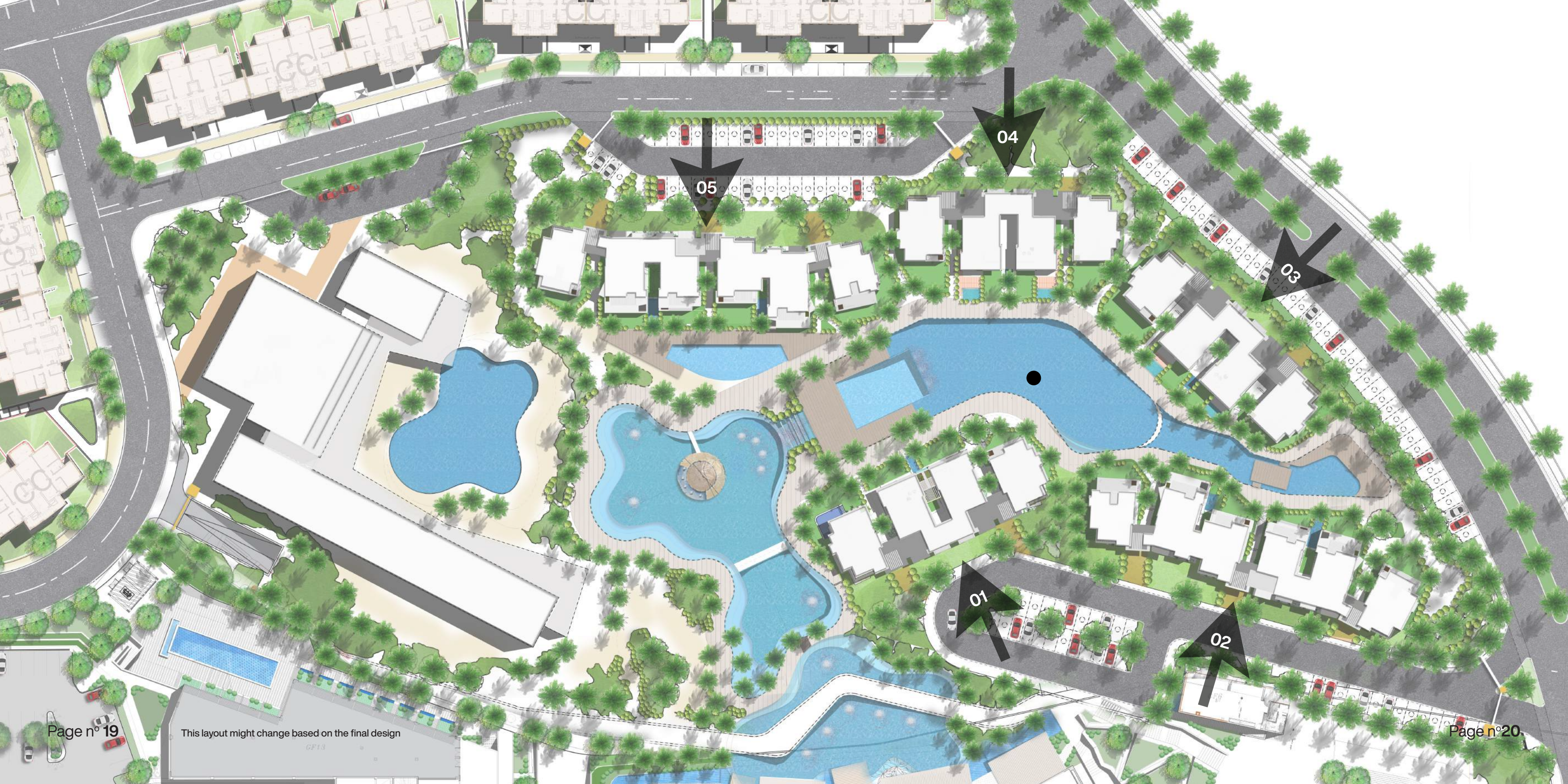
# CHALET STACKS

Riv's thoughtfully planned residences include a mix of one & two bedroom apartments, ensuring a perfect fit for various lifestyles.

*Each unit is crafted with precision and care, providing a blend of comfort and style.*

















# INSIDE RIV'S RESIDENCES

The story of Riv continues as you step inside your home. Every element of the interior design is carefully considered to reflect and complement the natural surroundings. From the soft hues inspired by the sand and sea to the use of

materials that echo the textures of the Mediterranean coast, the interiors are designed to extend the harmony of the landscape into your living space.

At Riv, every element tells a story. The open layouts encourage connection, whether it's a quiet family dinner or a lively gathering with friends. Thoughtful details, such as expansive windows that frame

views of swimming pools, water features and seamless transitions between indoor and outdoor spaces, create an experience that feels both calming and inspiring.



















































# FLOOR PLANS

*Riv's residences are fully finished and embody a Minimalistic Coastal style—where clean lines, airy interiors, and natural tones blend to create spaces that feel both modern and timeless.*



CHALET STACK 02

Ground floor



All drawings, areas, dimensions, and building materials above are the nearest to reality, the company has the right to amend them according to the specifications issued in their records and according to the marketing plans of the company for the project.



CHALET STACK 02

First floor



All drawings, areas, dimensions, and building materials above are the nearest to reality, the company has the right to amend them according to the specifications issued in their records and according to the marketing plans of the company for the project.



CHALET STACK 02  
Second floor



All drawings, areas, dimensions, and building materials above are the nearest to reality, the company has the right to amend them according to the specifications issued in their records and according to the marketing plans of the company for the project.



# CHALET STACK 02

## Third floor



All drawings, areas, dimensions, and building materials above are the nearest to reality, the company has the right to amend them according to the specifications issued in their records and according to the marketing plans of the company for the project.



CHALET STACK 03

Ground floor



All drawings, areas, dimensions, and building materials above are the nearest to reality, the company has the right to amend them according to the specifications issued in their records and according to the marketing plans of the company for the project.



CHALET STACK 03

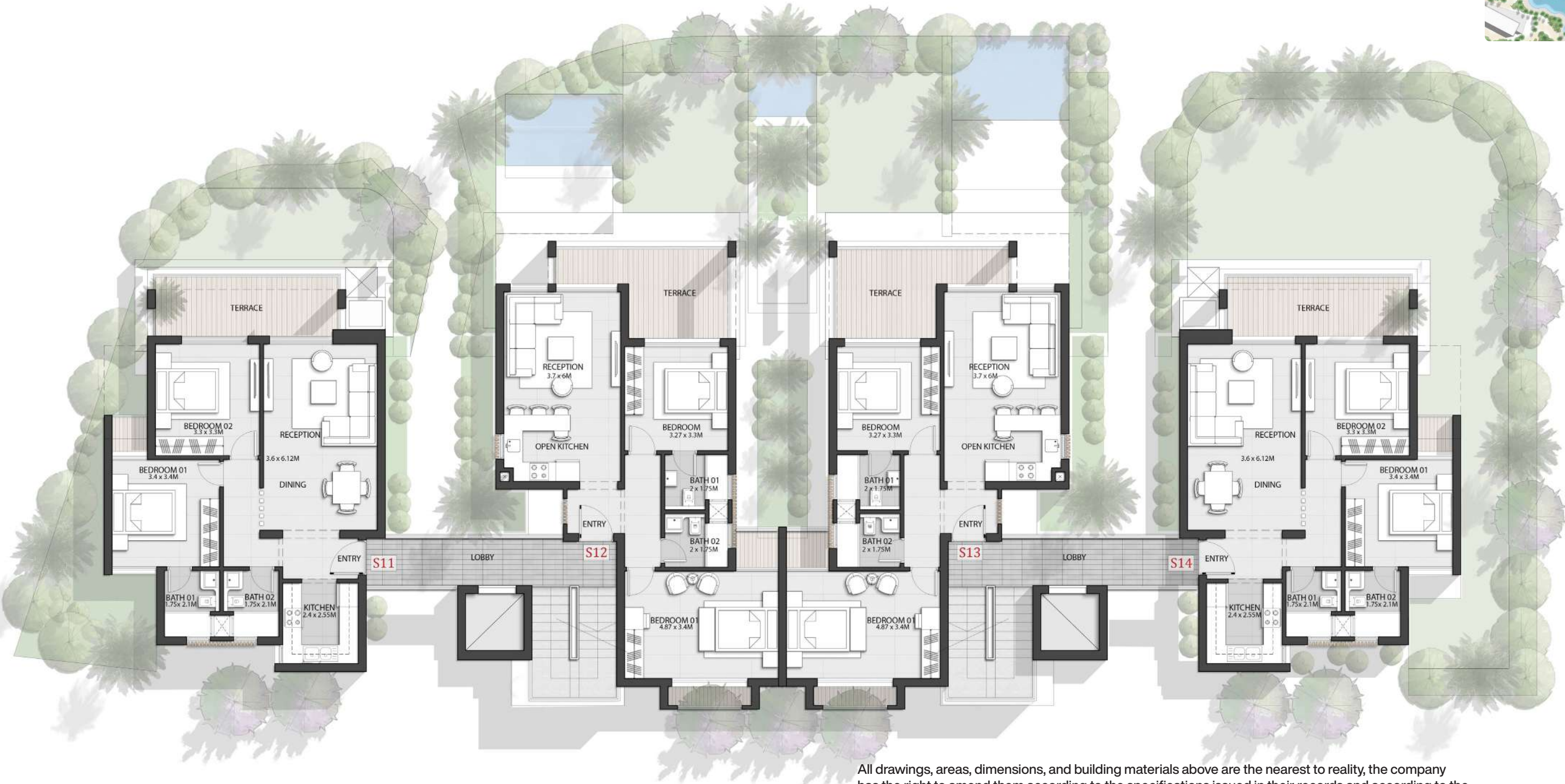
First floor



All drawings, areas, dimensions, and building materials above are the nearest to reality, the company has the right to amend them according to the specifications issued in their records and according to the marketing plans of the company for the project.



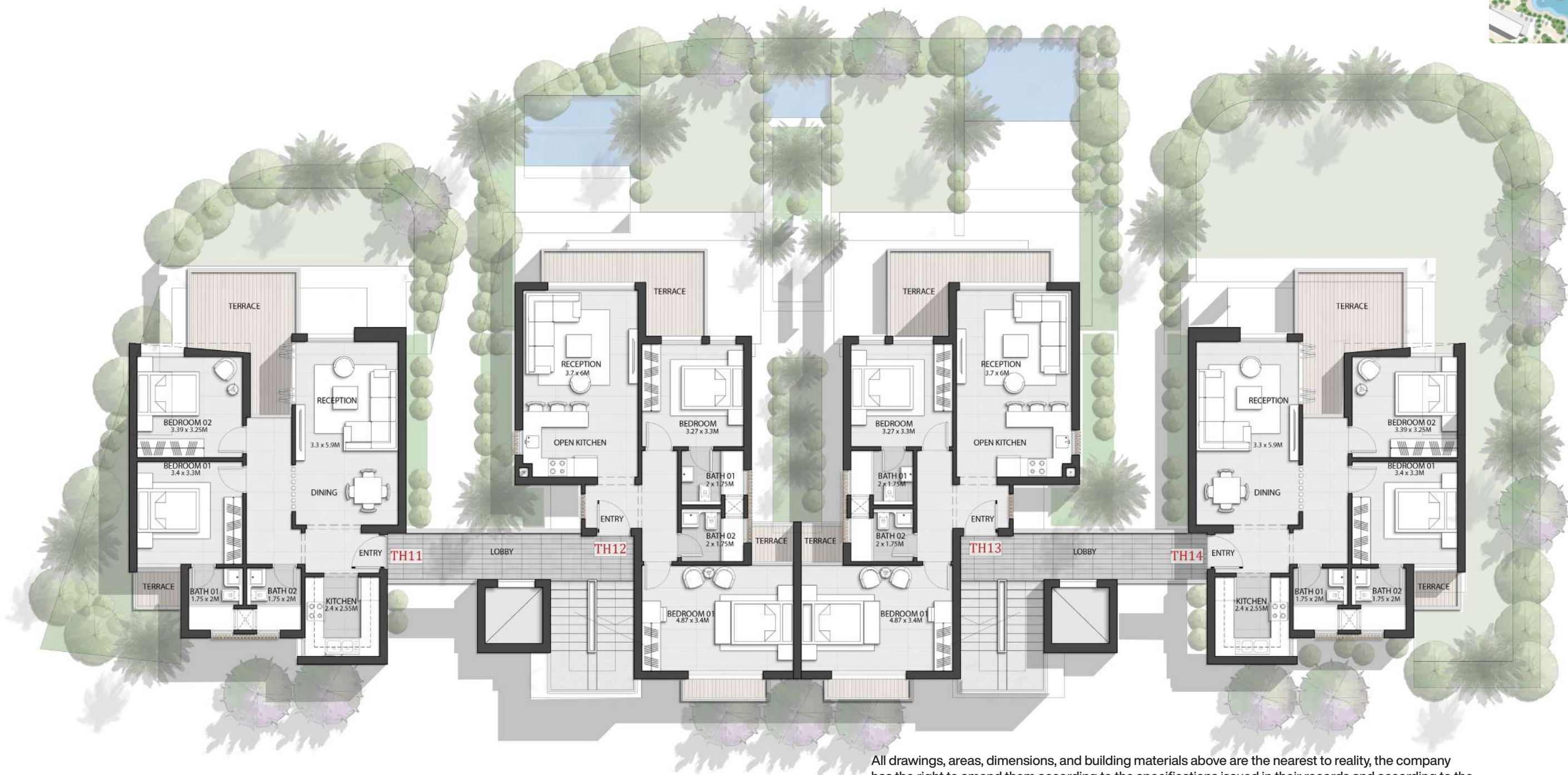
CHALET STACK 03  
Second floor



All drawings, areas, dimensions, and building materials above are the nearest to reality, the company has the right to amend them according to the specifications issued in their records and according to the marketing plans of the company for the project.



CHALET STACK 03  
Third floor



All drawings, areas, dimensions, and building materials above are the nearest to reality, the company has the right to amend them according to the specifications issued in their records and according to the marketing plans of the company for the project.



CHALET STACK 04  
Ground floor



All drawings, areas, dimensions, and building materials above are the nearest to reality, the company has the right to amend them according to the specifications issued in their records and according to the marketing plans of the company for the project.



CHALET STACK 04

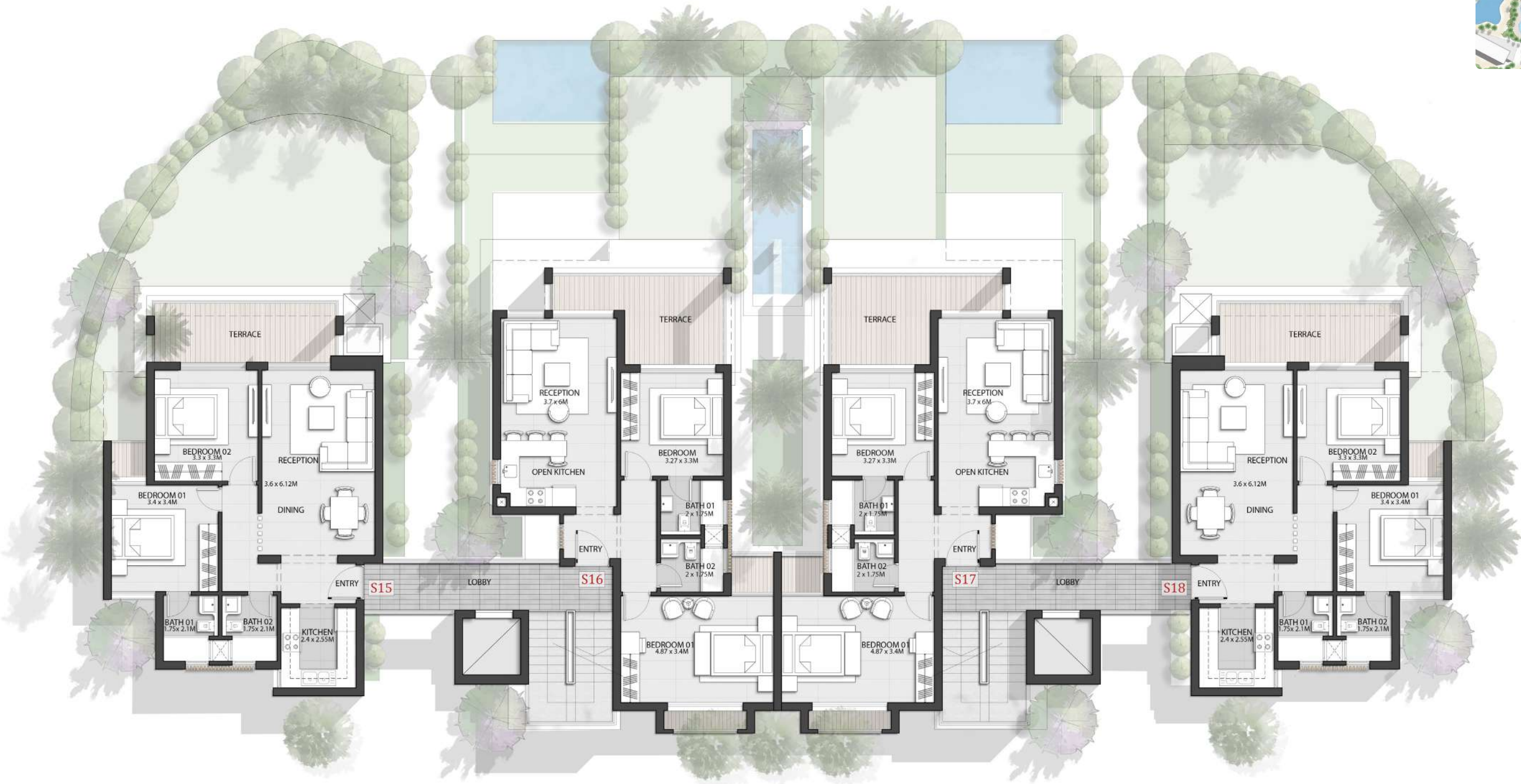
First floor



All drawings, areas, dimensions, and building materials above are the nearest to reality, the company has the right to amend them according to the specifications issued in their records and according to the marketing plans of the company for the project.



CHALET STACK 04  
Second floor



All drawings, areas, dimensions, and building materials above are the nearest to reality, the company has the right to amend them according to the specifications issued in their records and according to the marketing plans of the company for the project.



CHALET STACK 04  
Third floor



All drawings, areas, dimensions, and building materials above are the nearest to reality, the company has the right to amend them according to the specifications issued in their records and according to the marketing plans of the company for the project.



CHALET STACK 05  
Ground floor





CHALET STACK 05

First floor



All drawings, areas, dimensions, and building materials above are the nearest to reality, the company has the right to amend them according to the specifications issued in their records and according to the marketing plans of the company for the project.



CHALET STACK 05  
Second floor



All drawings, areas, dimensions, and building materials above are the nearest to reality, the company has the right to amend them according to the specifications issued in their records and according to the marketing plans of the company for the project.



CHALET STACK 05  
Third floor



All drawings, areas, dimensions, and building materials above are the nearest to reality, the company has the right to amend them according to the specifications issued in their records and according to the marketing plans of the company for the project.



# AMENITIES

## *Multiple Swimming Pools*

~ Enjoy a variety of pools designed for relaxation and recreation.

## *Elevators ~*

Convenient access across all levels for seamless mobility.

## *24/7 Security ~*

A gated community with continuous monitoring, on-site security, and CCTV coverage for enhanced safety and peace of mind.

## *Scenic Outdoor Seating Areas ~*

Thoughtfully designed spaces to unwind and soak in the coastal ambiance.





17147

[thisismelee.com](http://thisismelee.com)