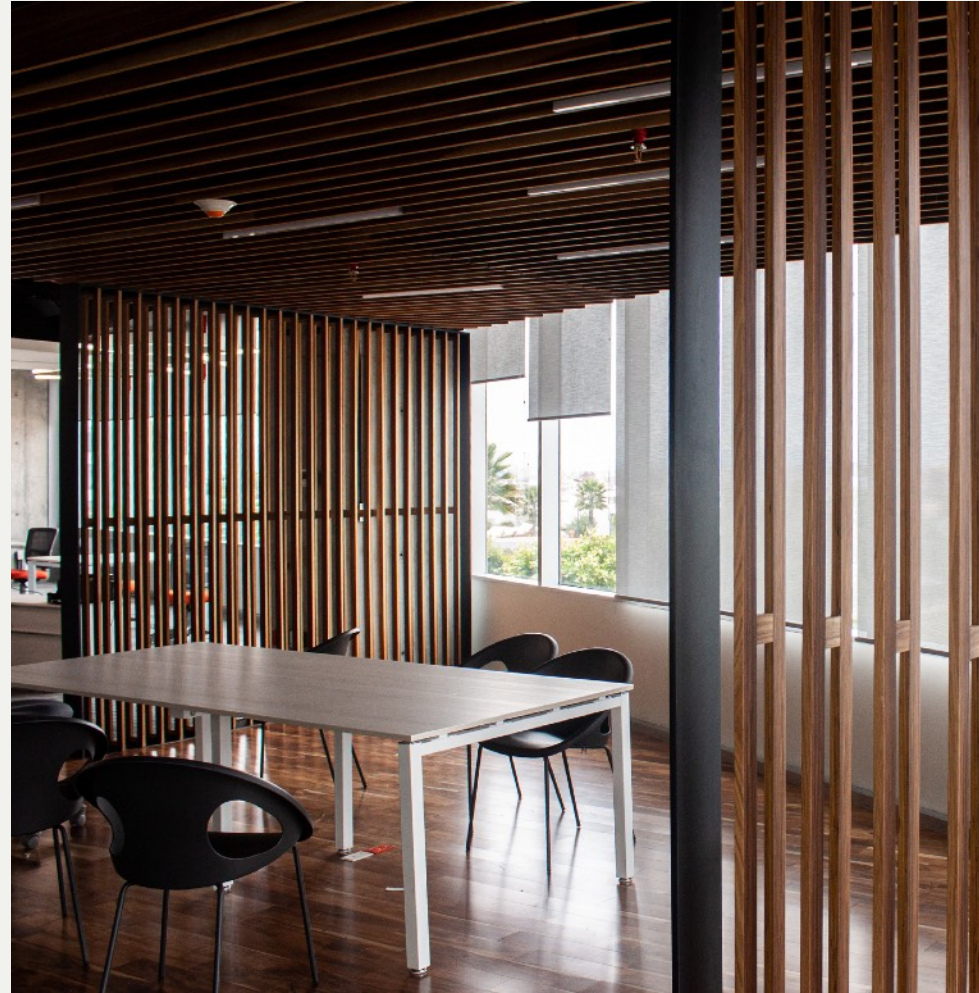




Pulse



The  
heartbeat of  
**entrepreneurship.**



Pulse is more than a location; it's a state of mind. It symbolizes the ever-present energy that drives entrepreneurs to create, innovate, and prosper

**3 MIN.**  
TO GOLDEN SQUARE

**2 MIN.**  
MIDDLE RING-ROAD

**2 MIN.**  
NEW CAPITAL

**1 MIN.**  
90 ROAD



Pulse Where Business Beats



Join a **thriving community** that embodies the heartbeat, rhythm, and vitality of a **dynamic urban environment**.

Experience a space that captures the **essence of entrepreneurship** and innovation, where businesses connect, ideas flow, and the **rhythm of success resonates**.



**Pulse** Where Business Beats



Pulse

Product mix

Retail

Offices

Clinics

Pulse Where Business Beats



**At Pulse,** we believe that success is not just about location; **it's about mindset.** Our brand symbolizes the ever-present energy that drives entrepreneurs to create, innovate, and prosper. Just as a strong pulse signifies life, the Pulse brand signifies **the lifeblood of modern business.**

**Pulse** Where Business Beats





WE  
BELIEVE  
IN THE  
INHERENT  
DIGNITY  
OF ALL  
PEOPLE

Reception





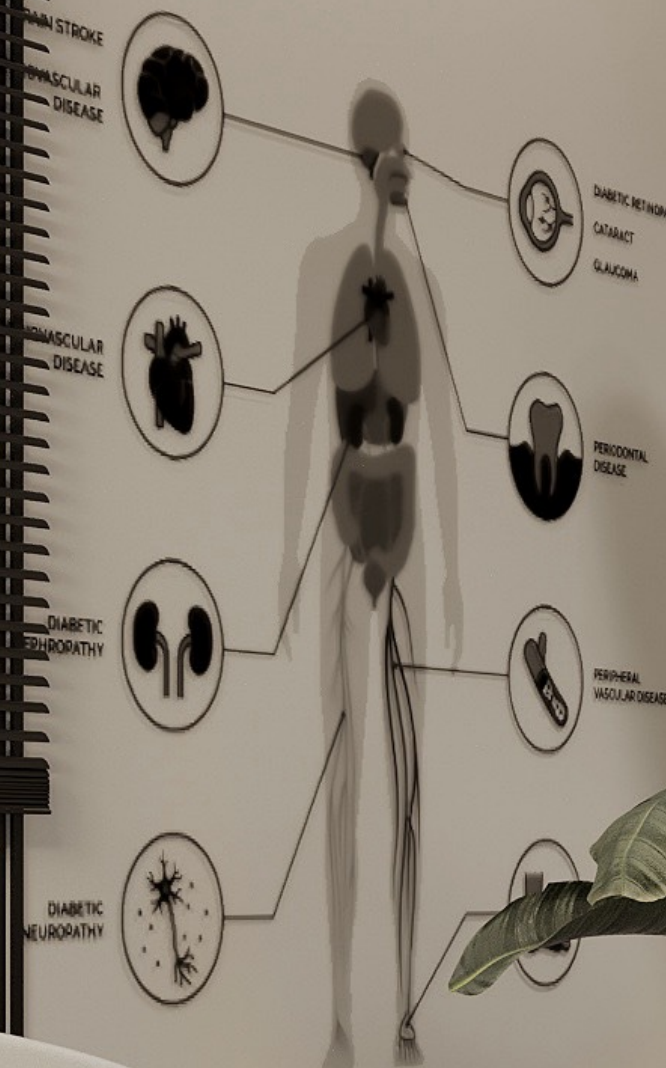


210

CLINIC 200-210

210

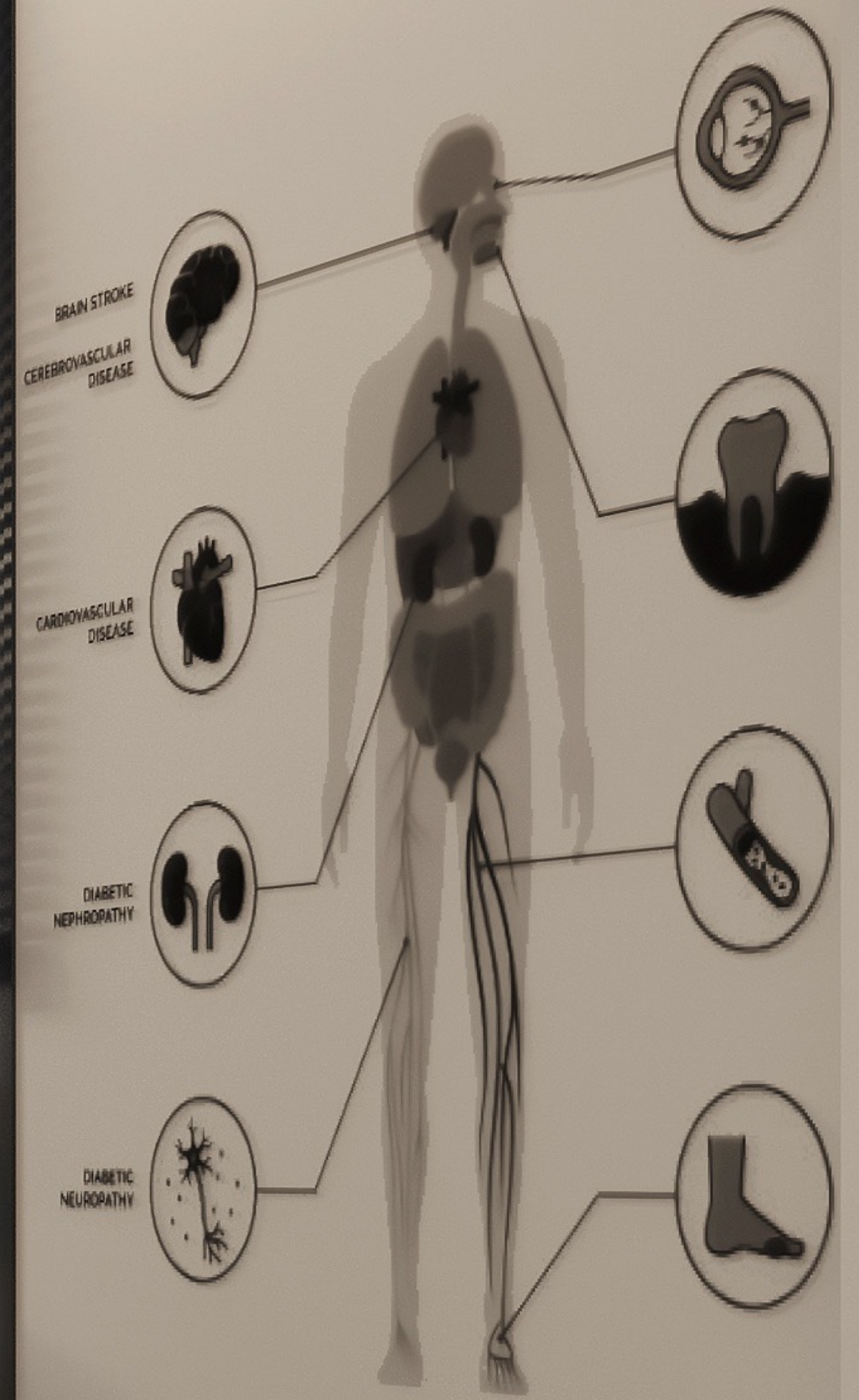
210



THE GREATEST WEALTH IS HEALTH

HT 1A

YOUR  
DOCTOR







# Finishing **specs**



**Disclaimer:** Please note that the finishing provided Includes: Flooring, wall paintings, ceiling.

**Not included:** Furniture, partitions, curtains , pendants and Information desks .

**Availability of selected porcelain tiles may subject to market availability.**





WALL  
PAINTING

PORCELAIN  
FLOOR

**Disclaimer:** Please note that the finishing provided Includes: Flooring, wall paintings, ceiling.

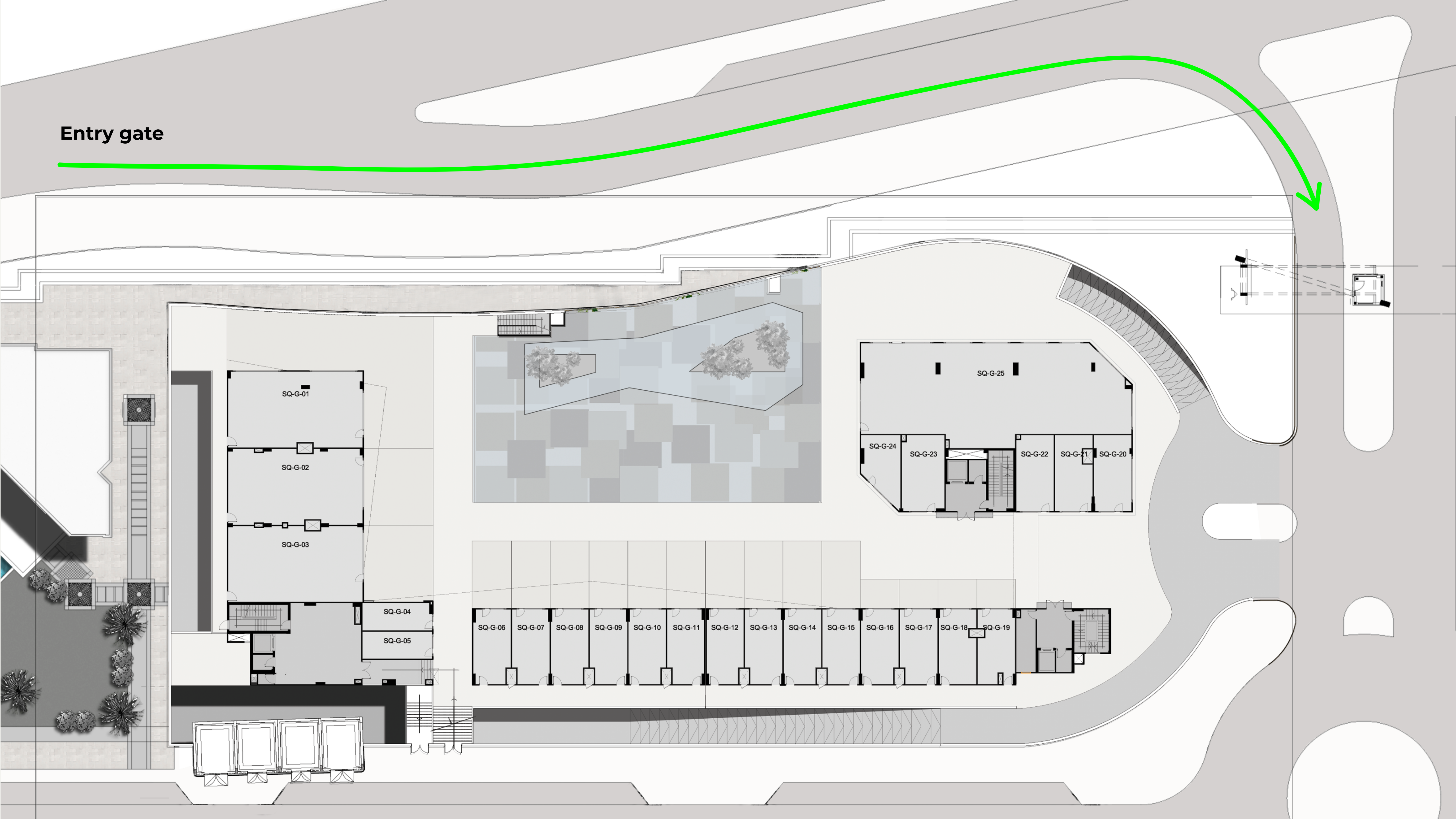
**Not included:** Furniture, partitions, curtains , pendants and Information desks .

**Availability of selected porcelain tiles may subject to market availability.**

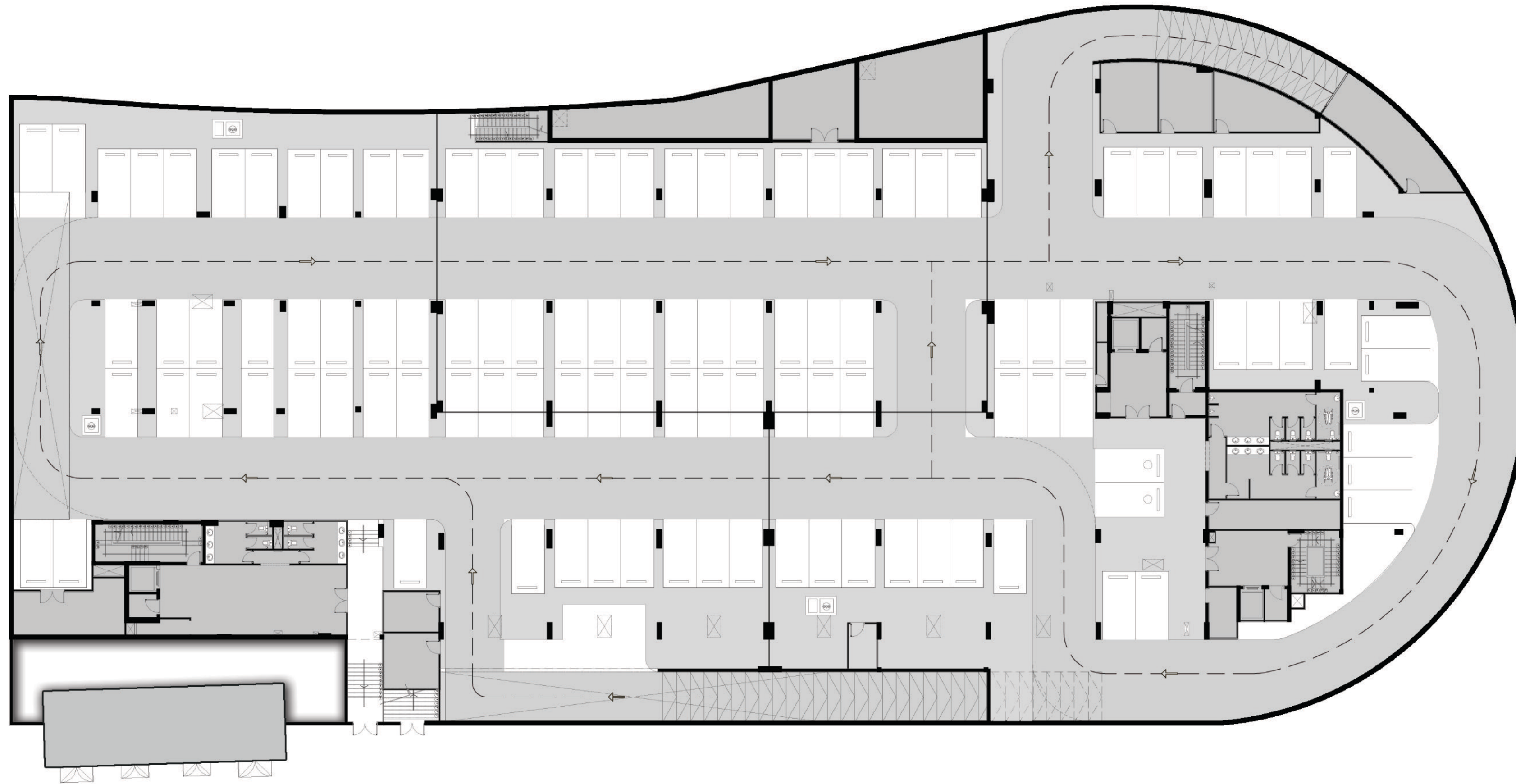


# Floor plans

Entry gate

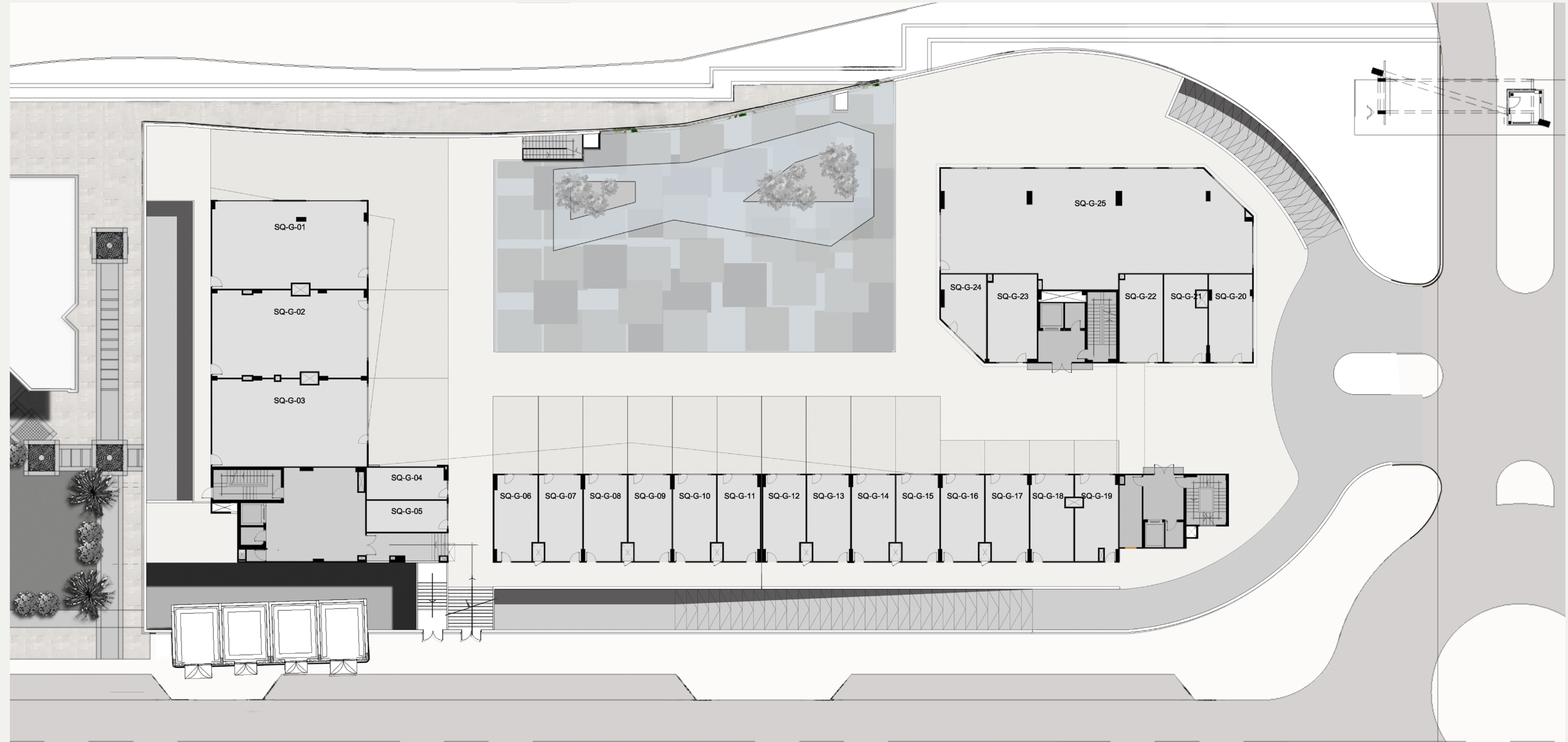


## Basement



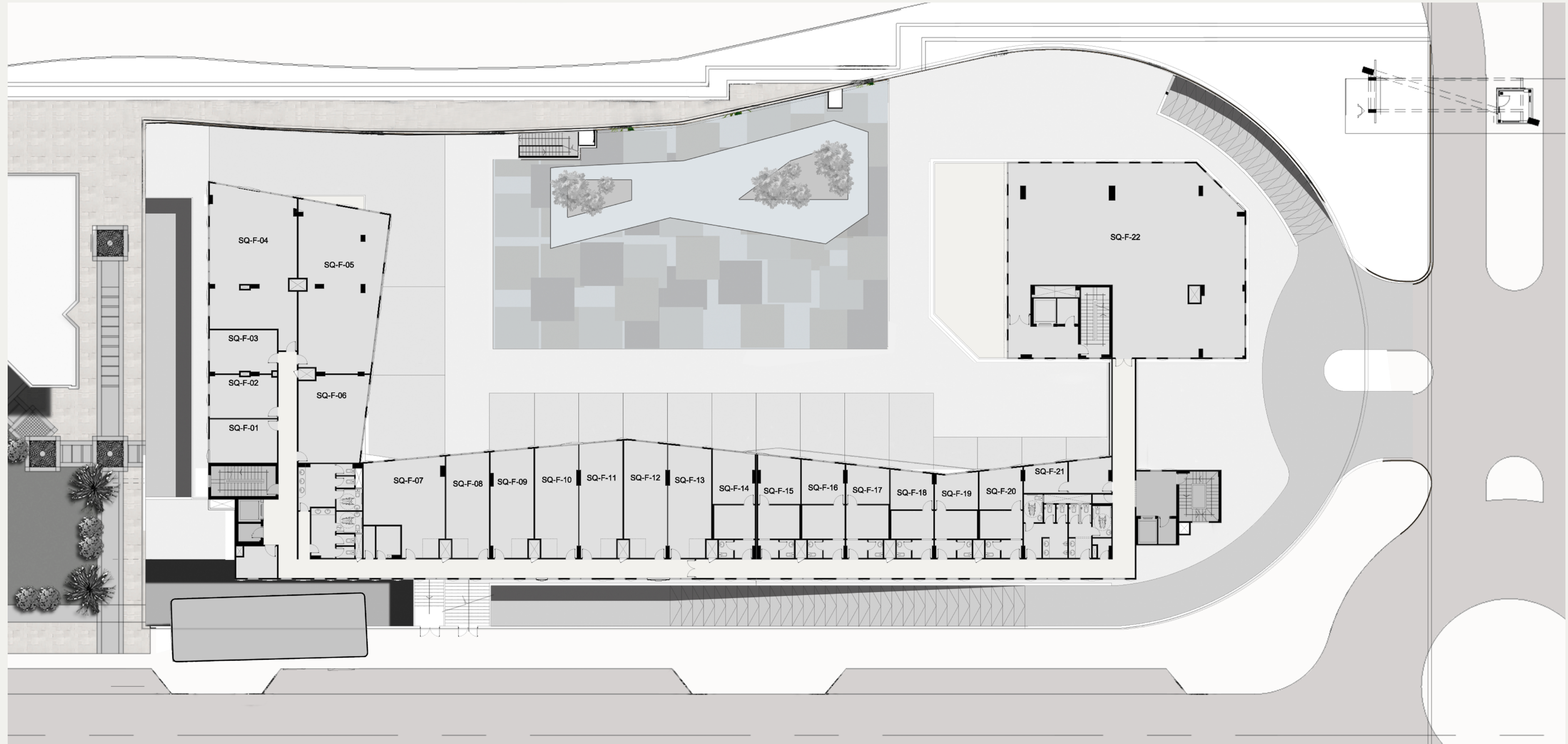
All drawings, areas, dimensions, and building materials above are the nearest to reality, the company has the right to amend them.  
**According to the specifications issued in their records and according to the marketing plans of the company for the project.**

## Ground floor



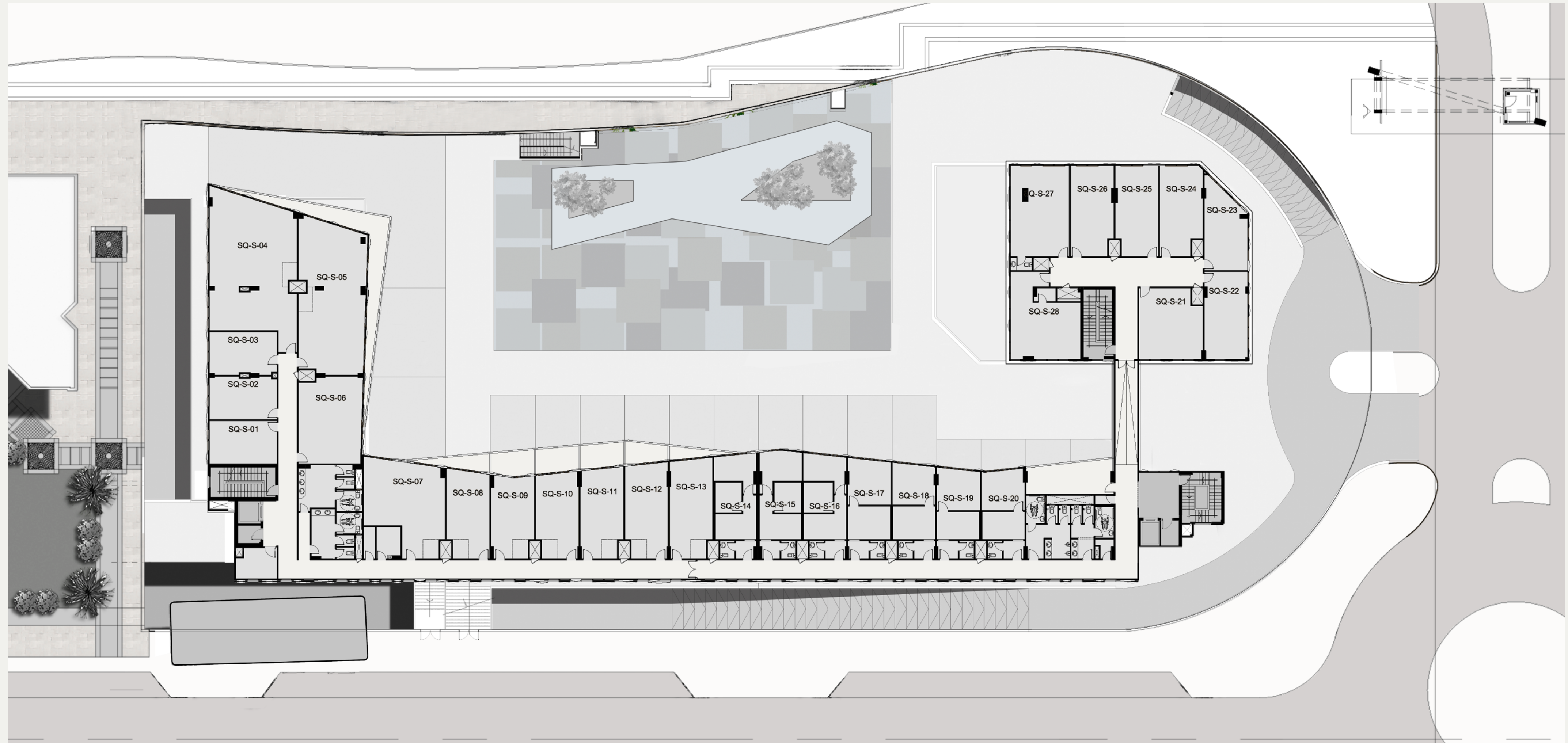
All drawings, areas, dimensions, and building materials above are the nearest to reality, the company has the right to amend them.  
**According to the specifications issued in their records and according to the marketing plans of the company for the project.**

# 1st floor



All drawings, areas, dimensions, and building materials above are the nearest to reality, the company has the right to amend them. According to the specifications issued in their records and according to the marketing plans of the company for the project.

## 2nd floor



All drawings, areas, dimensions, and building materials above are the nearest to reality, the company has the right to amend them.  
**According to the specifications issued in their records and according to the marketing plans of the company for the project.**

# Amenities

01

Parking area


02

24/7 security

03

State of the art fire  
and alarm systems





**10 %** \_\_\_\_\_ downpayment.

**6 years** \_\_\_\_ installments.

**2.5 years** \_ delivery.



We invite you to join a **community that's always in motion,**  
where your business finds **its unique rhythm for growth.**  
Embrace the pulse of opportunity and surround yourself with  
like-minded individuals who are passionate about making  
an impact in the business world.



# Pulse

Where Business Beats